



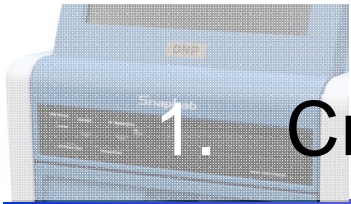
Digital Photo Printer DS-SL20

How to create:

- Border data
- Logo stamp data

The following words are trademarks of their respective owners.

- Adobe and Photoshop are either registered trademarks or trademarks of Adobe Systems Incorporated in the United States and/or other countries.
- Microsoft and Windows are registered trademarks of Microsoft Corporation in the United States and/or other countries.



1. Creating a Template

DS-SL20

Create a border design using image editing software.

Image Size

Create image data with the correct size, as follows.

Printer	Print Size		Image Size (H x V pixels)
	(inch)	(cm)	
DS-SL20	3 x 5	9 x 13	1728 x 1210
	4 x 6	10 x 15	2048 x 1382
	5 x 7	13 x 18	2380 x 1728
	6 x 8	15 x 20	2724 x 2048
DS80*1	4 x 8*2	10 x 20	2448 x 1236
	8 x 10	20 x 25	3036 x 2448
	8 x 12	20 x 30	3636 x 2472

*1 These sizes can be used when an expansion printer is connected.

*2 This size can be used when selecting "3up 4x8 photo card" menu.

Data Format

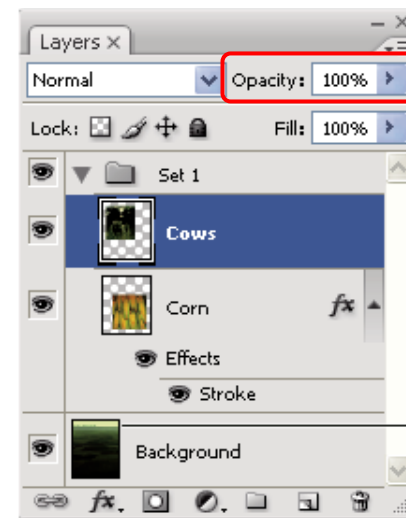
Only image data in PNG format can be used.

Please save the data as PNG.

The color tone which can be handled is 32 bits (24 bits RGB + 8 bits alpha channel).

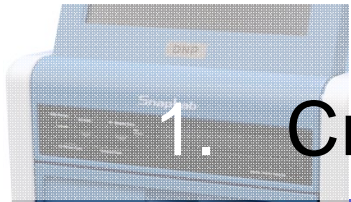
Transparent

The transparent is effective in the border.



Set the transparent level.





1. Creating a Template

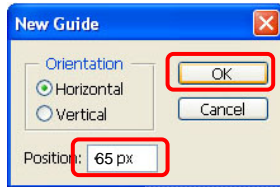
DS-SL20 Create a border design using image editing software.

Area which may not be printed

A portion close to each edge of the image may not be printed.

However, you can set guide lines via the Photoshop Guide View to check that important parts of the image are inside this portion.

- 1 Choose [View] > [New Guide].
- 2 In the dialog box, select Horizontal or Vertical orientation, enter a position, and click [OK].

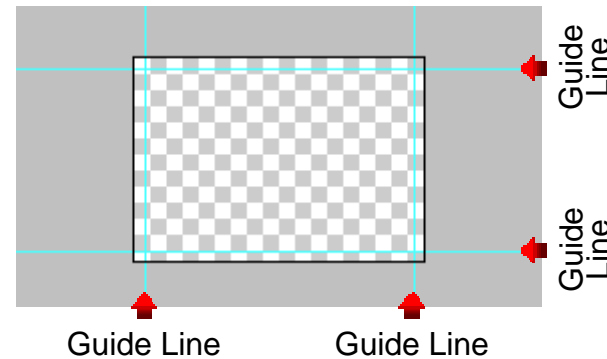


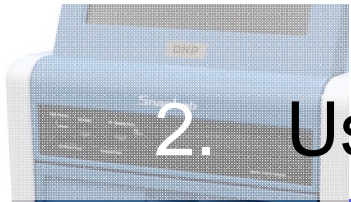
▲ Enter a position.

Position list

Print Size		Position (pixel)			
		Horizontal		Vertical	
(inch)	(cm)	Top	Bottom	Left	Right
3 x 5	9 x 13	65	1145	65	1663
4 x 6	10 x 15	65	1317	65	1983
5 x 7	13 x 18	65	1663	65	2315
6 x 8	15 x 20	65	1983	65	2659
4 x 8	10 x 20	48	1188	48	2400
8 x 10	20 x 25	48	2400	48	2988
8 x 12	20 x 30	48	2400	48	3588

- 3 You will now see the guide line on the image. If you want to lock all guides, choose [View] > [Lock Guides].





2. Using the Utility Software

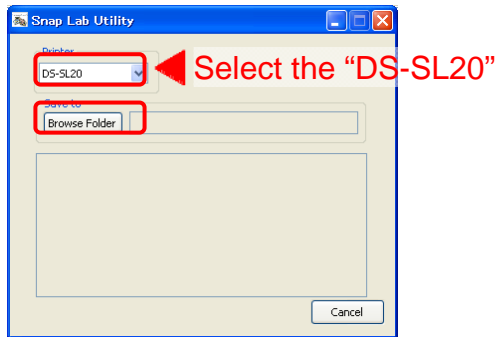


DS-SL20 Export the image data to the template data.

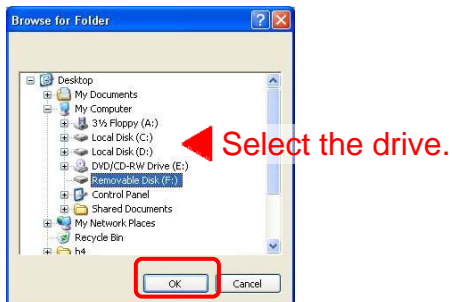
- 1 Double click on the “SnapLabUtility.exe”.



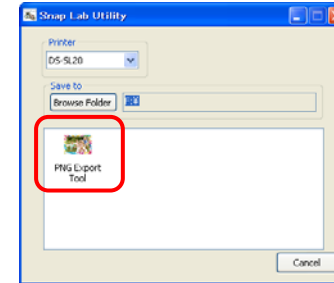
- 2 Select the “DS-SL20” and click the [Browse Folder].



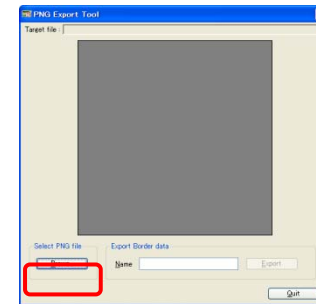
- 3 Select the drive where the template data will be stored. And click [OK].



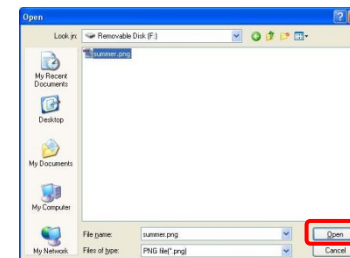
- 4 Click the “PNG Export Tool”.

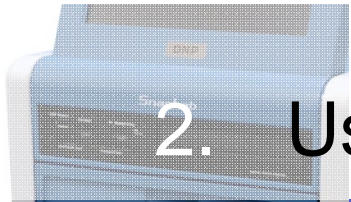


- 5 Click the [Brows...].



- 6 Select the PNG file to be used for the template and click the [Open].



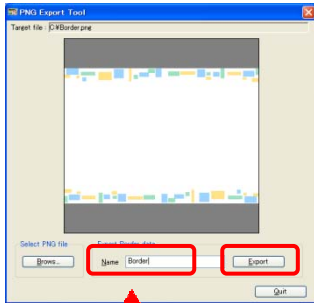


2. Using the Utility Software



DS-SL20 Export the image data to the template data.

7 Input the "Name" and click the [Export].



Input the template name.

Template Name:

If creating a Border, this can be:

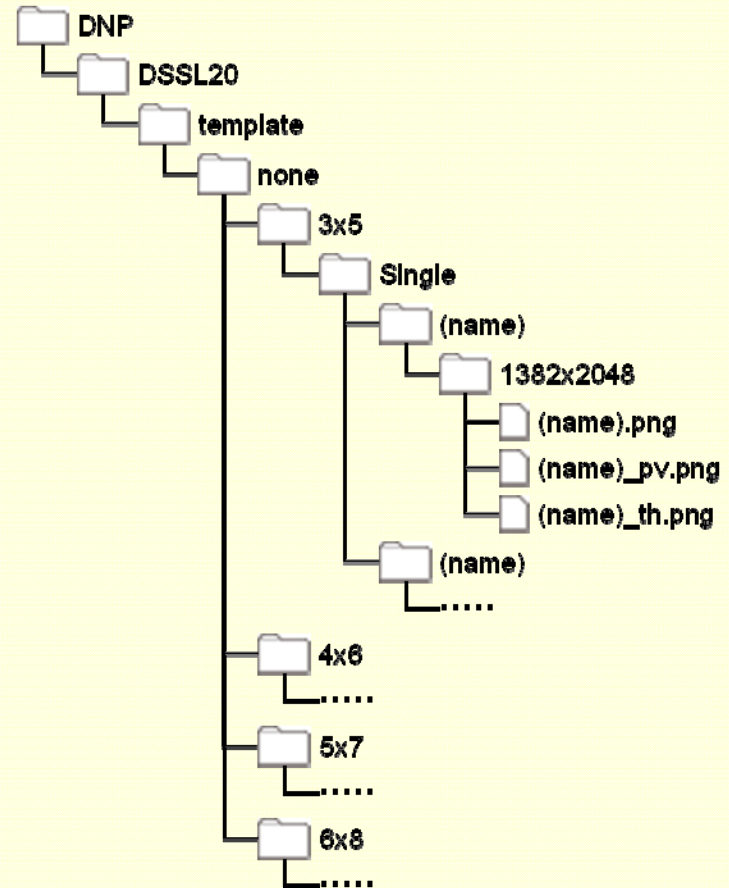
- Any name, except prohibited characters in Windows, characters using 2 bytes code, and KANA characters.
- Any name, except the following:
AUX, CON, NUL, PRN, CLOCK, COM0 to COM9, LPT0 to LPT9

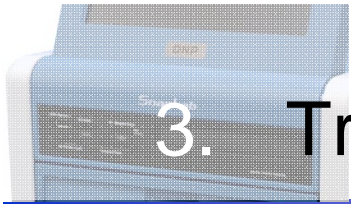
If creating a Logo Stamp, use one of the following:

__SnapLabPrintLogo

(Note: "__" is a double underscore.)

When the Utility software is used, the following folders and files are created on the destination drive.



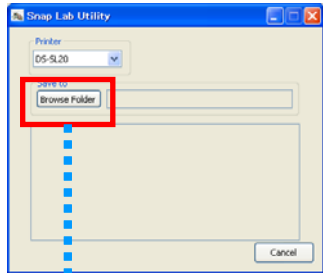


3. Transferring Templates

DS-SL20

Copy the template data to an expansion CompactFlash card.

Utility Software



STEP 1

Export the template data to an expansion CompactFlash card by specifying its drive letter.



STEP 2

Insert the expansion CompactFlash card into the designated CompactFlash slot on the DS-SL20.

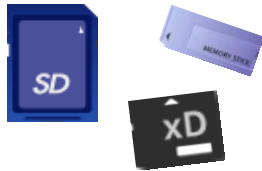


To write the template data directly to an expansion CompactFlash card...

If your PC does not have a CompactFlash slot...

STEP 1

Export the template data to a memory card by specifying its drive letter.



STEP 2

Insert the memory card and expansion CompactFlash card into the DS-SL20.



STEP 3

Copy the data from the memory card to the expansion CompactFlash card, using the template tab of the administration screen.

