



# Digital Photo Printer **DS-SL10**

How to create:

- Border data
- Logo stamp data

The following words are trademarks of their respective owners.

- Adobe and Photoshop are either registered trademarks or trademarks of Adobe Systems Incorporated in the United States and/or other countries.
- Microsoft and Windows are registered trademarks of Microsoft Corporation in the United States and/or other countries.



# Creating a Template

**DS-SL10**

Create a border design using image editing software.

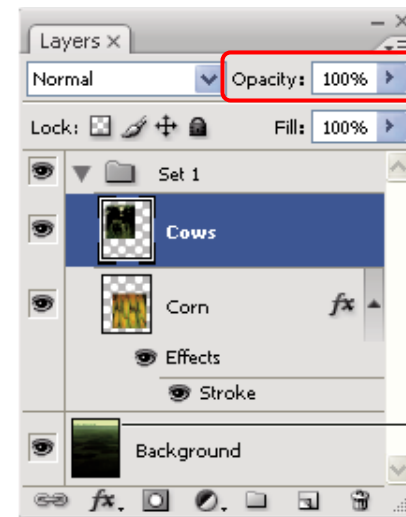
## Image Size

Create image data with the correct size, as follows.

Printer	Print Size		Image Size (H x V pixel)
	(inch)	(cm)	
DS-SL10	3 x 5	9 x 13	1536 x 1100
	4 x 6	10 x 15	1848 x 1248
	5 x 7	13 x 18	2148 x 1536
	4 x 4	15 x 20	1248 x 1248
	4 x 7	10 x 18	2148 x 1248
	4 x 8	10 x 20	2448 x 1248

## Transparent

The transparent is effective in the border.



◀ Set the transparent level.



## Data Format

Only image data in PNG format can be used.

Please save the data as PNG.

The color tone which can be handled is 32 bits (24 bits RGB + 8 bits alpha channel ).



# Creating a Template

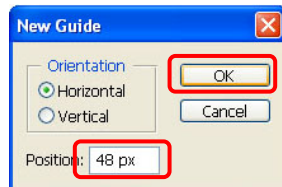
**DS-SL10** Create a border design using image editing software.

## Area which may not be printed

A portion close to each edge of the image may not be printed.

However, you can set guide lines via the Photoshop Guide View to check that important parts of the image are inside this portion.

- 1 Choose [View] > [New Guide].
- 2 In the dialog box, select Horizontal or Vertical orientation, enter a position, and click [OK].

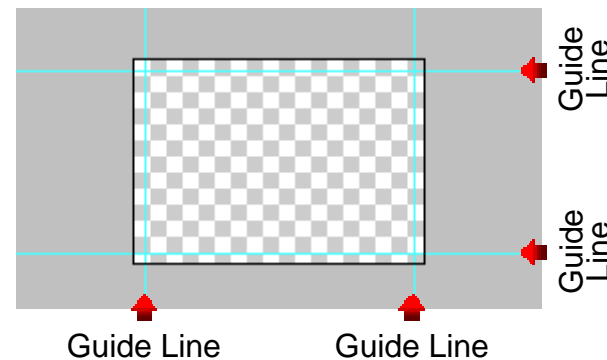


▲ Enter a position.

Position list

Print Size		Position (pixel)			
		Horizontal		Vertical	
(inch)	(cm)	Top	Bottom	Left	Right
3 x 5	9 x 13	48	1052	48	1488
4 x 6	10 x 15	48	1800	48	1200
5 x 7	13 x 18	48	2100	48	1488
4 x 4	10 x 10	48	1200	48	1200
4 x 7	10 x 18	48	2100	48	1200
4 x 8	10 x 20	48	2400	48	1200

- 3 You will now see the guide line on the image. If you want to lock all guides, choose [View] > [Lock Guides].





# Using the Utility Software

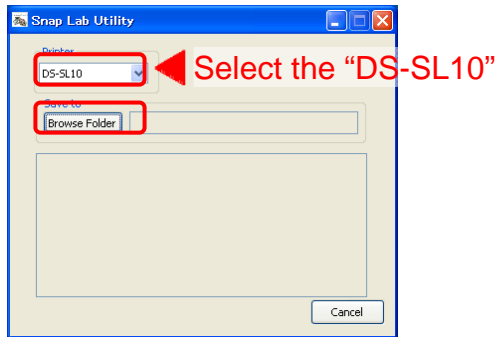


**DS-SL10** Export the image data to the template data.

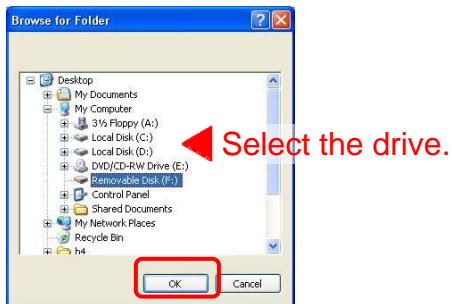
- 1 Double click on the “SnapLabUtility.exe”.



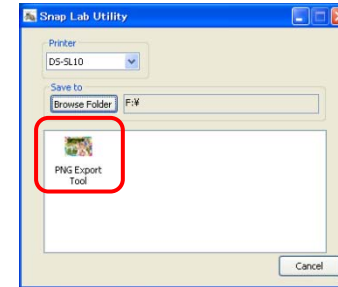
- 2 Select the “DS-SL10” and click the [Browse Folder].



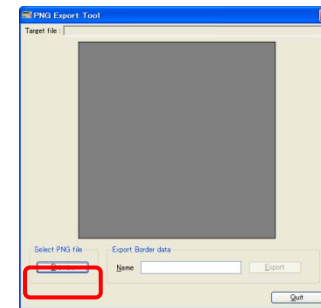
- 3 Select the drive where the template data will be stored. And click [OK].



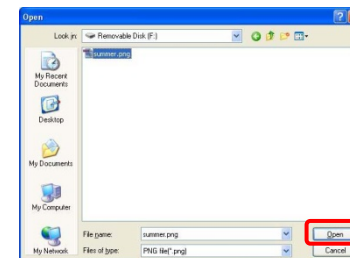
- 4 Click the “PNG Export Tool”.



- 5 Click the [Brows...].



- 6 Select the PNG file to be used for the template and click the [Open].





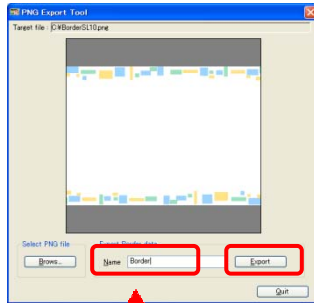
# Using the Utility Software



DS-SL10

Export the image data to the template data.

- 7 Input the “Name” and click the [Export].



Input the template name.

## Template Name:

If creating a Border, this can be:

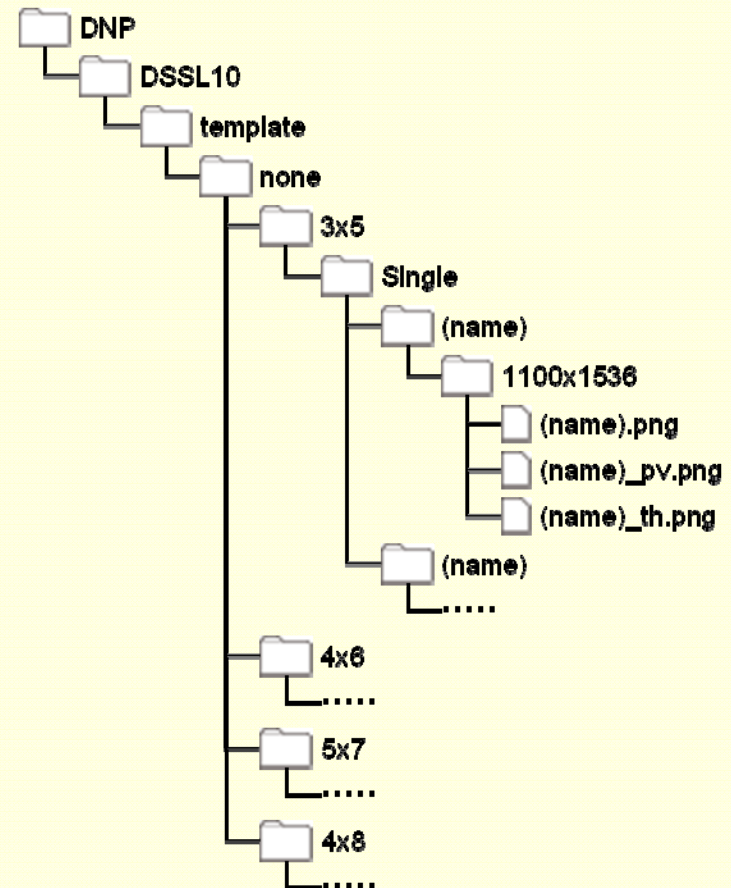
- Any name, except prohibited characters in Windows, characters using 2 bytes code, and KANA characters.
- Any name, except the following:  
AUX, CON, NUL, PRN, CLOCK, COM0 to COM9, LPT0 to LPT9

If creating a Logo Stamp, use one of the following:

\_\_SnapLabPrintLogo

(Note: “\_\_” is a double underscore.)

When the Utility software is used, the following folders and files are created on the destination drive.



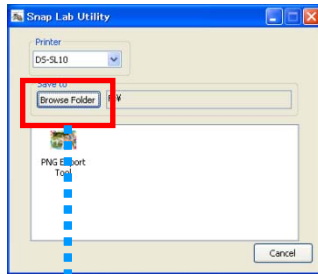


# Transferring Templates

**DS-SL10**

Copy the template data to an expansion CompactFlash card.

## Utility Software



### STEP 1

Export the template data to an expansion CompactFlash card by specifying its drive letter.



### STEP 2

Insert the expansion CompactFlash card into the designated CompactFlash slot on the DS-SL10.

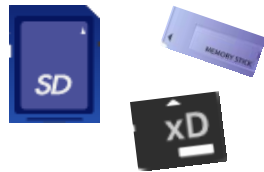


To write the template data directly to an expansion CompactFlash card...

If your PC does not have a CompactFlash slot...

### STEP 1

Export the template data to a memory card by specifying its drive letter.



### STEP 2

Insert the memory card and expansion CompactFlash card into the DS-SL10.



### STEP 3

Copy the data from the memory card to the expansion CompactFlash card, using the template tab of the administration screen.

